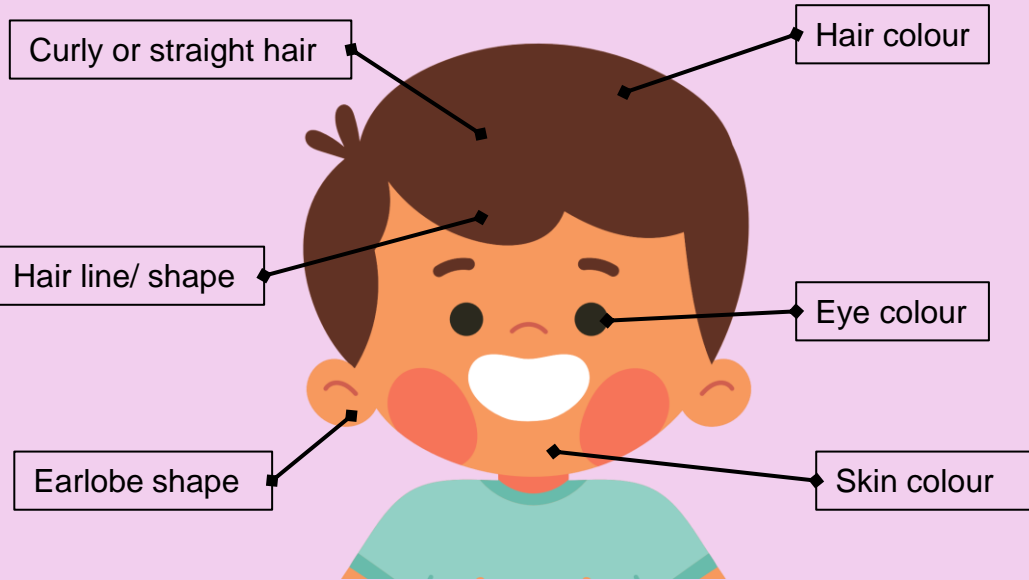


OBSERVABLE TRAITS



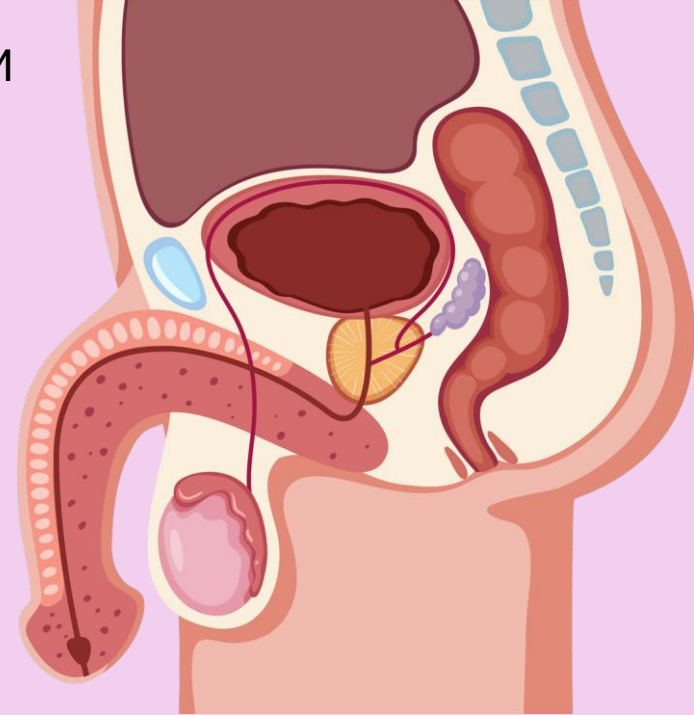
MALE REPRODUCTIVE SYSTEM

TESTICLES

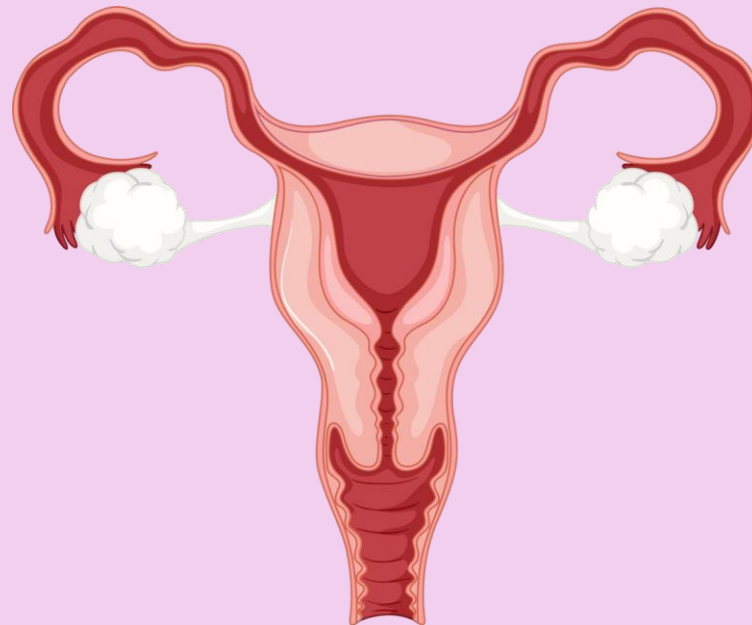
These are the glands that produce the sperm cells and the male sex hormone called testosterone

PENIS

It is the external male organ with a tip called glans. It is covered with foreskin that may be removed through circumcision.



HUMAN REPRODUCTION



OVARY

Produces the female reproductive cell. It releases one egg a month.

FALLOPIAN TUBES

Thin soft tubes extending from the uterus to the ovaries. Fertilization takes place in the fallopian tubes.

UTERUS

Hollow pear-shaped organ with a muscular wall and lining. Fertilized egg develops into a foetus.

FEMALE REPRODUCTIVE SYSTEM