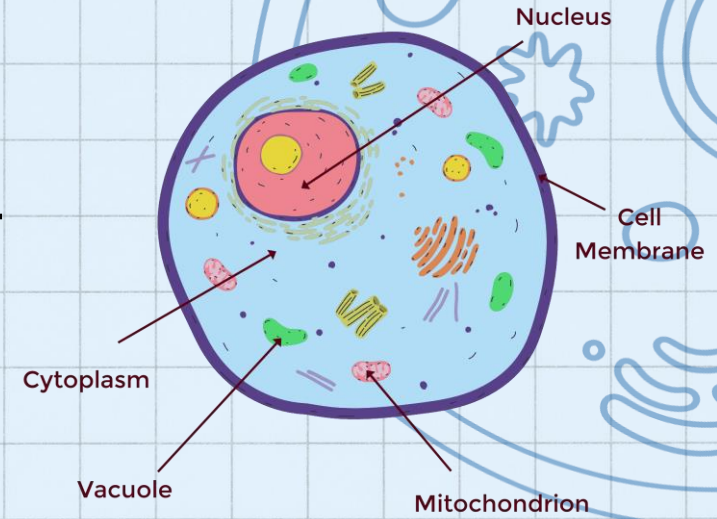


# PLANT VS ANIMAL CELL



Part	Function
Cell wall	Support cell and gives it its shape.
Chloroplast	Chlorophyll traps sunlight that plants need to make food.
Nucleus	Controls all activities within the cell. Contains information that passes from one generation to the next.
Cytoplasm	Activities of the cell takes place in the cytoplasm.
Vacuole	Large space filled with cell sap. Cell sap contains water and dissolved substance like sugar and salt.
Cell membrane	Partially permeable membrane that controls the movement of substances in and out of the cell.

Part	Function
Cell membrane	Partially permeable membrane that controls the movement of substances moving in and out of the cell.
Nucleus	Controls all activities within the cell. Contains information that passes from one generation to the next.
Vacuole	Tiny space containing air, liquid or food particles.
Cytoplasm	Activities of the cell takes place in the cytoplasm.